



Title
 Principal Yuichi Hashimoto

On a pleasant Thursday (October 3), the Inter-school Sports Day was held, and the Grade 6 students participated on behalf of Higashimachi. All the students participated in the first event, group jump rope, and showed a sense of unity as they jumped and counted together to try and break the record they had set at school. Then, the runners of the 100-meter dash had a fresh look of accomplishment after running the straight course at the National Stadium. They also did their best and cheered each other on for the elective events. In the boy's 400-meter relay, a few students could not perform to the best of their abilities due to an accident in a previous event. However, they did their best to complete the race with all of their strength. This was an event where they showed their greatest effort to do their best.

The School Performance will be held from the end of October to the beginning of November. The children have been working hard on their roles during practice and have improved their acting skills. I am sure we will see performances with everyone from all grades united as one.

Student viewing days are Thursday, October 31 and Friday, November 1, and the family viewing day is Saturday, November 2. On the family viewing day, due to the small size of the gymnasium, a changeover system will be implemented for viewing each grade. Priority will be given to families of the performing grade. Please fill out the required information on the priority tickets. We apologize for the inconvenience and appreciate everyone's cooperation.

Regarding the reconstruction of Higashimachi Elementary School – in September, the Minato City Board of Education distributed a document about improving school facilities. According to the tentative schedule, construction will begin in April 2030 (with a temporary relocation to the former Sanko Elementary School), and the new school building will be operational in the summer of 2033. More information will be provided as we proceed with the reconstruction survey.

Date	Day	Events
1	F	School Performance (for students②)
2	Sa	Saturday school④, School Performance (for families)
3	Su	Culture Day
4	M	Culture Day observed
5	Tu	Hanaiku (G4 morning), Committees⑦
6	W	4 periods, Life studies (G1 morning)
7	Th	Social studies field trip (G5), Life studies (G1 morning), Grades 1-4 and 6 have 4 periods
8	F	Substitute holiday for School performance
9	Sa	Open schoolyard
10	Su	Minato Rugby Lesson
11	M	Morning assembly, Reading Week begins, Evac. drill, Clubs⑦
12	Tu	Student assembly (Broadcast), Family Asobi⑤
13	W	
14	Th	School Anniversary
15	F	Reading Week ends
16	Sa	Open schoolyard
17	Su	
18	M	Morning assembly, Social studies field trip (G4)
19	Tu	Fire station field trip (G3)
20	W	
21	Th	4 periods, Health check for 2025 Grade 1 students
22	F	School Anniversary Assembly, Japanese Culture ②
23	Sa	Open schoolyard, Labor Thanksgiving Day
24	Su	
25	M	Morning assembly, Clubs⑧
26	Tu	G6 Minato Science Museum, 6 periods for Grade 2
27	W	
28	Th	4 periods, 5 periods for Grade 4 Class 1 teacher development
29	F	P.E. Assembly, 6 periods for Grade 3
30	Sa	Open schoolyard

Please check your grade newsletters for dismissal times.

November's Goal

Let's train our minds and bodies!

Notices

Emergency Evacuation Drill

The evacuation drill will simulate a J-Alert announcement during class.

111th School Anniversary

November 22 (Fri.), 8:40 – 9:35

Individual Parent-Teacher Meetings

December 5 (Thur.) – 10 (Tue.)

Reading Week

November 11 (Mon.) – November 15 (Fri.)

Human Rights Day (Lunch)

This month's Human Rights Day is on the 28th (Thur.). Lunch for that day will be maple toast and salmon cream stew from Canada.

November's Open Schoolyard

Nov. 9 (Sat.) Nov. 16 (Sat.)

Nov. 23 (Sat.) Nov. 30 (Sat.)

*12:00 – 15:00 for all four days.

※ Application for Smile Classes and Individual Assistance (2025-26 Term 1)
Yoshiko Saita Special Education

Those not currently registered for Smile Classes or an individual assistant may apply for term 1 of the next academic year by informing their child's teacher, the school nurse, or the vice principal.

*Please contact the school for any questions or details.

The School Performance

Minako Odori
Head of School Performances

At last, it's showtime! All of the grades have been practicing for this day. Looking back on their efforts, we can see they have grown more confident.

The children have set their own goals for their performances. So be sure to praise them for their efforts after watching them.

Grade 1: Everyone does their part with big gestures and a loud voice.

Grade 2: Big smiles and cheerful voices!

Grade 3: All together in a loud voice!

Grade 4: Everyone works together and does their part with loud voices!

Grade 5: Give the best performance and support others with songs and gestures.

Grade 6: Do our part to give a great performance.

The History of Higashimachi

Vice Principal Takehiro Kitahara

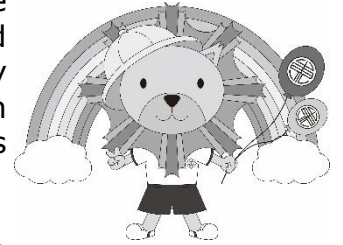
Higashimachi's anniversary is November 14 and celebrates 111 years since the school opened. Surely the three 1s in a row is an auspicious sign.

The school opened in 1913 as Higashimachi Primary School, and since then it has overcome more than a few dire situations, including being burned to the ground during World War II and the threat of closure due to a decrease in students. Indeed, Higashimachi Elementary is a school with tradition and history.

Last year, the school held a grand ceremony to celebrate its 110th anniversary. In the background, major renewal work was underway for one of Higashimachi's endeared monuments, the Kamisobori Well.

The well had grown old and outdated, and the water had stopped running. However, by March 2024, restoration of the well was completed.

This well is also used for emergencies, and we will continue to cherish it as a symbol of Higashimachi Elementary.



From the School Nurse's Office

Kumiko Shoji



The mornings and evenings are much colder, and it's easy to get sick this time of year if you are unaccustomed to the weather.

Even if children may be cold, they can warm up quickly by moving around even a little bit, so it is helpful to have clothes that can be removed at school. Please send your child to school with a jacket ready.

Also, from now through the winter contagious diseases like influenza will be more prevalent. We will probably be contacting more families to pick up their children if they have a fever or feel unwell after they have arrived. Please notify your child's teacher as soon as possible of any changes in your contact information. In many cases, parents and guardians can be contacted sooner if they tell their children before leaving for school where they will be that day. The cooperation of all parents and guardians will be greatly appreciated.